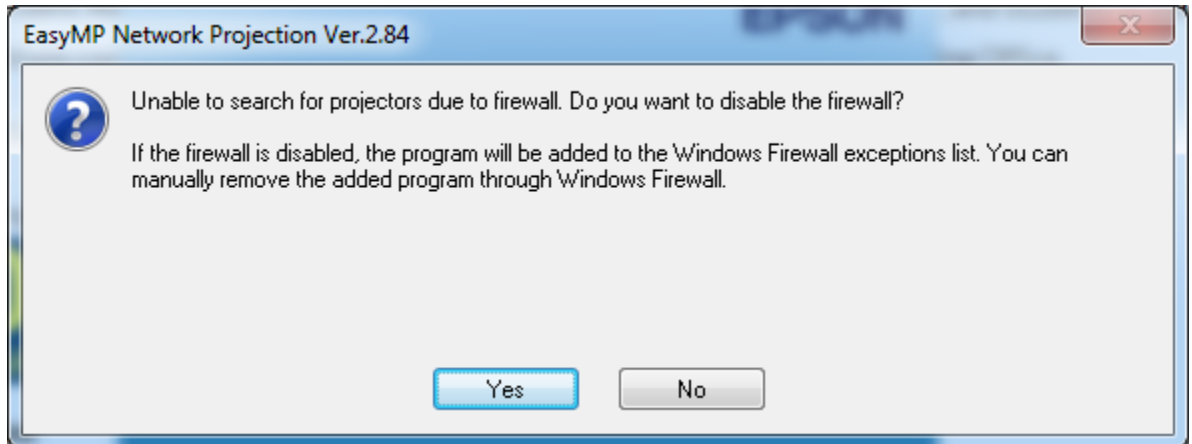
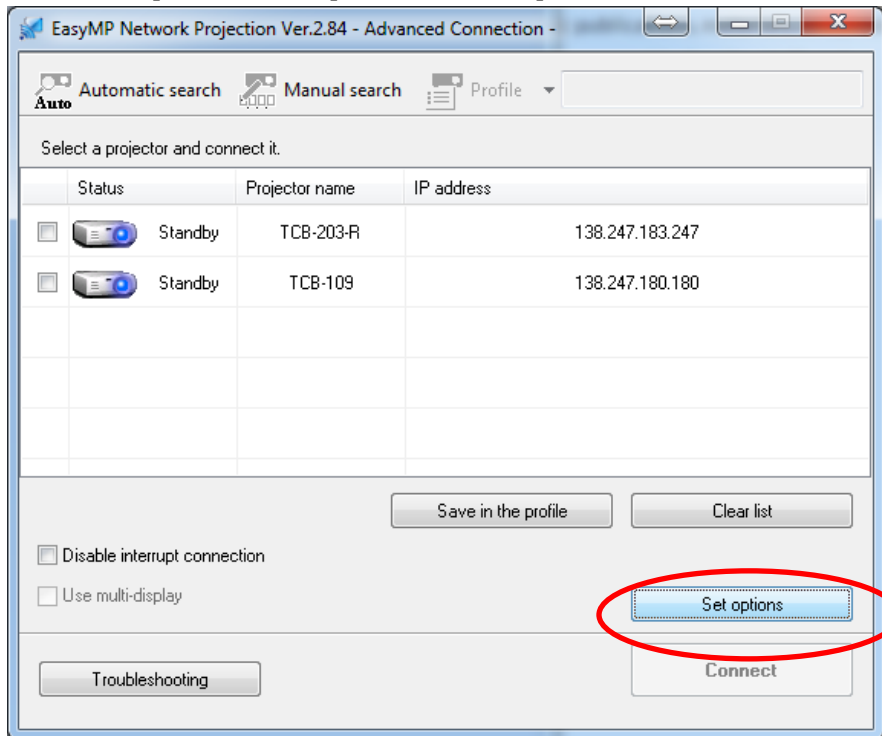


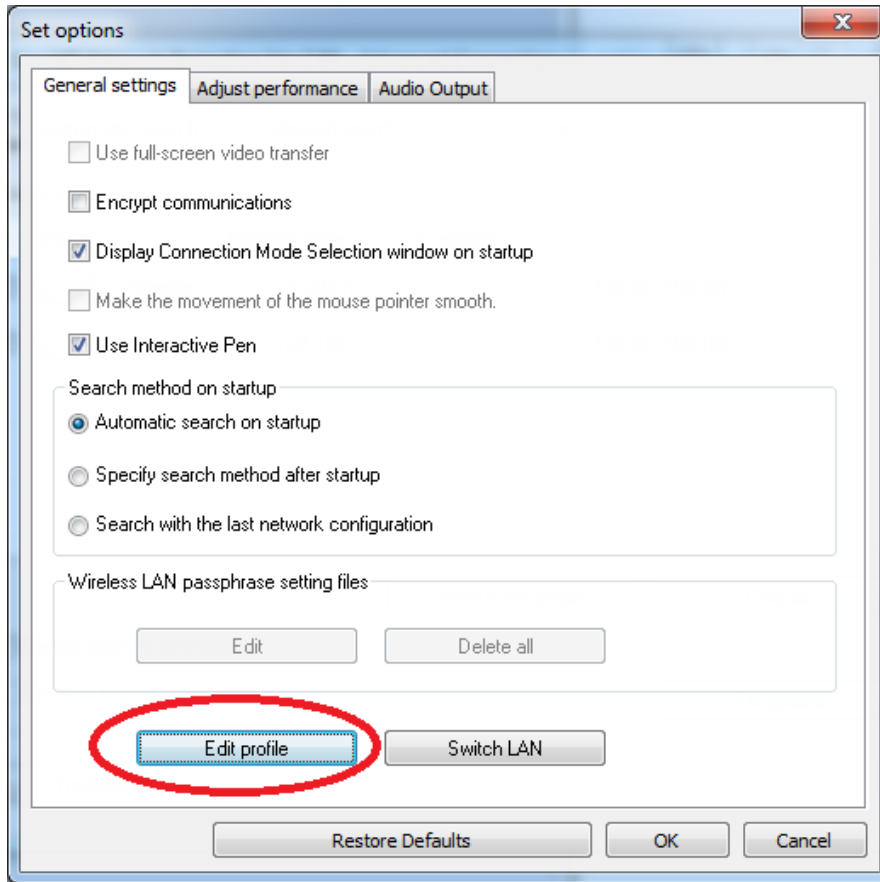
1. Be sure the Epson Client is installed on your machine. If it is not installed download the EpsonClient.exe from the link below.
<http://video.dsu.edu/help/WirelessProjection/Default.htm>
2. Once installed download the DSU_Profile.plist from The link above in step 1.
3. Start the Epson Client and click advanced connection if prompted. If a pop up asks to disable the firewall click yes.



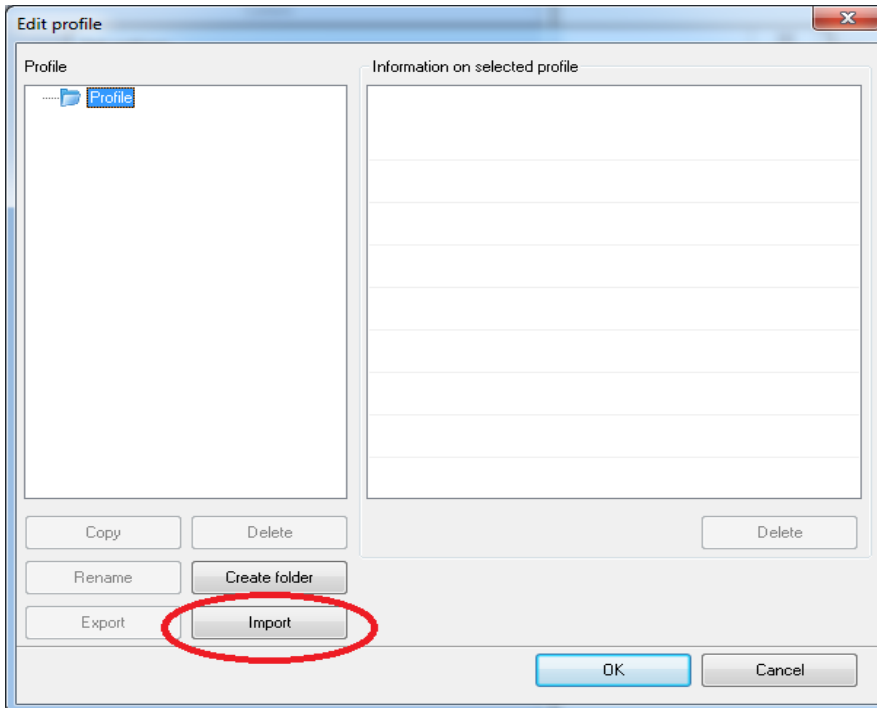
4. Once the Epson Client opens click set options.



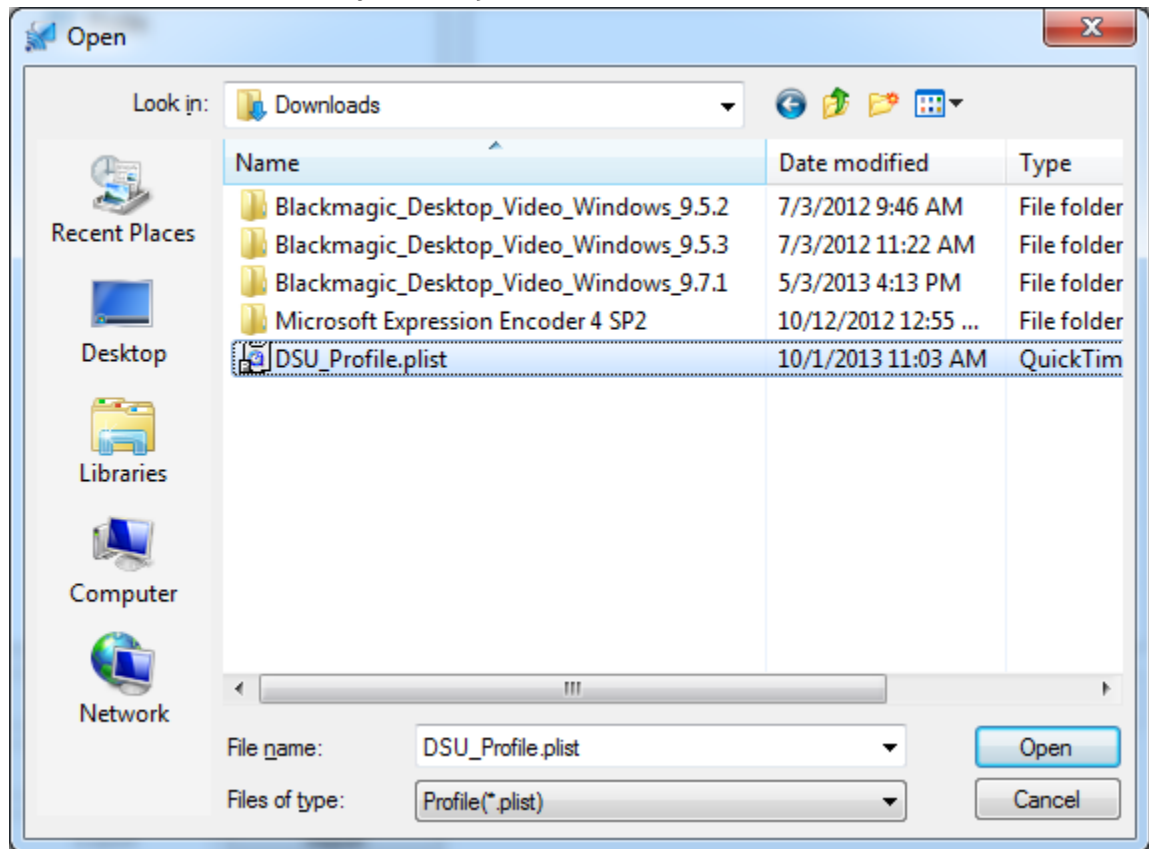
5. Select edit profile.



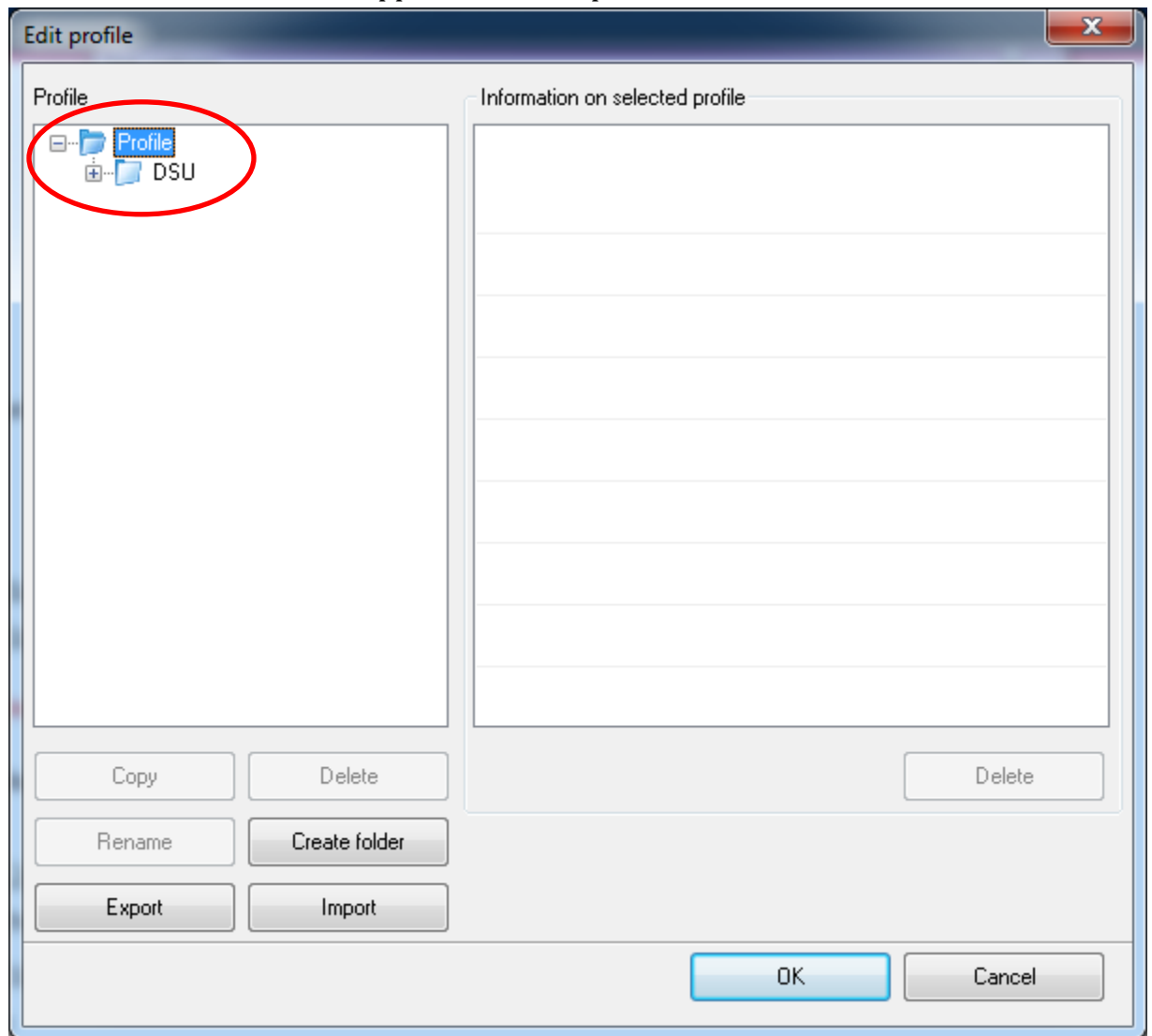
6. Click Import



7. Locate and open the DSU_Profile.plist file that was downloaded in step 2 (likely in the downloads folder by default)



8. The DSU folder should now appear under the profile folder. Click OK.



9. Click OK once more on the next window to set the options.

10. The profile is now loaded and you are now able to connect to projectors on campus wirelessly.

